



Hunters Hill Sailing Club

2017-18 Club Championship Series & 2017-18 Point Score Series

3rd September 2017 - 8th April 2018

Organising Authority:

**Hunters Hill Sailing Club Inc.
Merrington Place Woolwich NSW 2110**

SAILING INSTRUCTIONS

SAILING INSTRUCTIONS

1 RULES

- 1.1 The series will be governed by the rules as defined in the Racing Rules of Sailing (RRS).
- 1.2 The Prescriptions and Special Regulations of Yachting Australia, and class rules will apply.

2 NOTICES TO COMPETITORS

Notices to competitors will be posted on the official notice board on the western wall of the boatshed.

3 CHANGES TO SAILING INSTRUCTIONS

Any changes to the sailing instructions (SI's) will be posted at least 60 minutes before the warning signal of any race affected, except that any change to the schedule of races will be posted by 14:00 (Junior classes) or 17:00 (Senior classes) on any race day in relation to the next scheduled race day. Class secretaries may additionally notify changes by email.

4 SIGNALS MADE ASHORE

- 4.1 Signals made ashore will be displayed from the HHSC flag-mast located to the east of the ramp.
- 4.2 When flag AP is flown ashore prior to the scheduled time for the first warning signal, the first warning signal will be made no earlier than 15 minutes after removal of the AP flag (amends Race Signals).

5 SCHEDULE OF RACES

- 5.1 Dates of racing are shown at Attachment A.
- 5.2 Number of races:

<u>Class</u>	<u>Event</u>	<u>Maximum races per day</u>
All classes	Point Score Scratch starts	3
	Point Score Handicap starts	1
	Club Championship	3*
	Sprint racing and special events	As advised

* The race committee intends to conduct 3 races per day to catch up when the number of races conducted to date is less than the number programmed to date in the calendar

- 5.3 **Junior classes:** A briefing will normally be held not before 10:45.
The first warning signal will be displayed not before 11:55.
- 5.4 **Senior classes:** A briefing may be held at approximately 13:30.
The first warning signal will be displayed not before 14:30.

6 CLASS FLAGS

- 6.1 The following table describes the class flags. In the case a specified flag is unavailable, an appropriate substitute may be used.

Class / Fleet	Flag
Junior Race Fleet (Sabot & Optimist)	White flag with Gold diamond
Laser 4.7	Yellow flag with 4.7 emblem

Class / Fleet	Flag
Flying 11	White flag with Flying 11 emblem
Laser 4.7	Yellow flag with 4.7 emblem
Laser Radial	Blue flag with Laser emblem
Laser Standard / Laser Fleet (Standard & Radial & 4.7)	White flag with Laser emblem
Mirror	Red flag with Mirror emblem
29er / NS14	29er class flag

All Laser classes will start together and will be scored as a single Laser Fleet.

7 RACING AREAS

The racing area will be in the vicinity of HHSC.

8 THE COURSES

- 8.1 The courses are described in Attachment B.
- 8.2 Courses may be varied to suit conditions of the day, in which case details will be provided at a briefing and a change to these SI's will be posted.
- 8.3 Numbered flags, boards, numeral pennants, letters or flags indicating the course to be sailed will be displayed at or before the warning signal for each race.
- 8.4 For windward-leeward-triangular courses, a green flag or green board will be displayed at or before the warning signal for each race to indicate marks (except at a gate) are to be rounded to starboard, otherwise marks (except at a gate) are to be rounded to port.
- 8.5 River courses may be shortened before the start by displaying code flag 'S' at the warning signal (amends RRS 32.2).

9 MARKS

- 9.1 **Shore based starts** - the starting and finishing marks and the inner distance mark will be poles with orange flags.
On water starts - the starting mark will be a pole with an orange flag. The finishing mark will have black and white check markings.
- 9.2 Mark 1 will be a pole with an orange flag.
- 9.3 Other course marks will be poles with green and yellow flags.

10 AREAS THAT ARE OBSTRUCTIONS

- 10.1 Boats shall not race in the area between the shore and the outermost line of permanent moorings.
- 10.2 Boats shall not race in Naval Prohibited Waters.
- 10.3 After starting, boats shall not sail across the finish line in either direction except when finishing.

11 THE START

- 11.1 Boats whose warning signal has not been made shall remain clear of the starting area during the starting sequence for other races.
- 11.2 **Junior Point Score:** The starting sequence will normally be:
Laser 4.7, Junior Race Fleet
- 11.3 **Junior Club Championship:** The starting sequence will normally be:
Laser 4.7, Junior Race Fleet

- 11.4 **Senior classes:** The starting sequence will normally be: 29er, Mirror, Laser Fleet, Flying 11. NS14 will start with 29er.
- 11.5 **On water starts:** The starting line will be between the flag-mast on the Start boat and the starting mark at the port end of the line.
- 11.6 **Shore based starts:** The starting line will be between the HHSC flag-mast and the starting mark. The starting mark may be mounted in a boat. An inner distance mark may be laid, in which case the starting line will be between the inner distance mark and the starting mark.
- 11.7 **Shore based starts:** A pole mark displaying a red flag may be laid approximately south of the starting mark. When this mark is laid, boats shall not conduct any pre-start manoeuvring between the mark and Cockatoo Island.
- 11.8 **3 minute sequence:** If code flag 'F' is displayed with the warning signal, the starting signal will be made 3 minutes after the warning signal, (2 minutes after the preparatory signal) (amends RRS26).
- 11.9 **Handicap starts:** Code flag 'P' will be displayed 5 minutes before the start of the handicap starting sequence, and a sound signal may be made. One minute before the starting time of each boat, her starting numeral (equal to her Club handicap) will be exhibited for one minute. The lowering of her starting numeral will be her signal to start.
- 11.10 Except in Club Championship races, and in addition to the actions required by RRS29.1, the race committee may inform boats that they are subject to Individual Recall by hailing their sail number (amends RRS29.1 and RRS 41).

12 CHANGE OF THE NEXT LEG OF THE COURSE

- 12.1 To change the next leg of the course, the race committee will move the original mark (or the finishing line) to a new position.

13 THE FINISH

- 13.1 **Shore based:** the finishing line will be between the HHSC flag-mast and the finishing mark.
- 13.2 **On water:** the finishing line will be between the flag-mast on the Start boat and the finishing mark.

14 PENALTY SYSTEM

The Two-Turns Penalty is replaced by the One-Turn Penalty (amends RRS44.1).

15 TIME LIMITS

- 15.1 The time limit for Junior classes is 90 minutes.
- 15.2 The time limit for Senior classes is 180 minutes (when one race is scheduled) or 90 minutes (when two races are scheduled).
- 15.3 For handicap starts the time limit will be calculated from the start time of the boat with the least handicap.
- 15.4 Boats failing to finish within 150% of the elapsed time of the first boat to finish will be scored a finishing time of 150% of the elapsed time of the first boat to finish, without a hearing (amends RRS 35 and A4).

16 PROTESTS AND REQUESTS FOR REDRESS

- 16.1 Protest forms are available at the HHSC committee room. Protests shall be delivered to the race committee within the protest time limit.
- 16.2 The protest time limit is 30 minutes after the race committee has completed all race management and safety duties, and the PRO is ashore.

- 16.3 Notices will be posted on the Official Noticeboard within 30 minutes of the protest time limit to inform competitors of hearings in which they are parties or named as witnesses.
- 16.4 Notices of protests by the race committee will be posted to inform boats under RRS 61.1(b).
- 16.5 Breaches of SI's 11.1, 11.7, 22 will not be grounds for protest by a boat. This changes RRS 60.1(a). Penalties for these breaches may be less than disqualification if the protest committee so decides.

17 SCORING

- 17.1 A boat that registers late will be eligible for Point Score and Club Championship points for races completed after her entry has been accepted.
- 17.2 Each boat shall nominate a skipper prior to her first race. The nominated skipper may act as skipper or crew. A boat shall be eligible to score points only when her nominated skipper is aboard.

SCORING - CLUB CHAMPIONSHIP

- 17.3 At least 3 boats must start at least 50% of the races to constitute a series.
- 17.4 RRS A9 Race Scores in a Series longer than a Regatta will apply. The number of boats entered in the series will be the number of registered boats that have completed at least one race.
- 17.5
 - (a) When fewer than 5 races are completed, a boat's series score will be the total of her race scores.
 - (b) When from 5 to 6 races are completed, a boat's series score will be the total of her race scores excluding her worst score.
 - (c) When from 7 to 10 races are completed, a boat's series score will be the total of her race scores excluding her 2 worst scores.
 - (d) When 11 or more races are completed, a boat's series score will be the total of her race scores excluding her 3 worst scores.
- 17.6 For the Senior Laser Club Championship, each boat must choose to score race points either as a Standard rig or a Radial rig or a 4.7 rig, and will be scored DNC for any race in which she does not sail with that rig. Scratch results will be calculated by adjusting elapsed times by reference to each boat's yardstick. Laser Standard has a yardstick of 114; Laser Radial has a yardstick of 118.5; Laser 4.7 has a yardstick of 125.
- 17.7 If a boat does not race because her nominated skipper is representing HHSC at a NSW State, Australian or World Championship or any other event approved in advance in writing by the race committee in any HHSC eligible class, she shall be scored, for each race that she misses, the lower of:
 - (a) average of her prior scores in the series (rounded to nearest 1 decimal place); if she has less than 4 prior scores then her subsequent results shall be included until she has 4 scores . In all cases DNC shall be excluded; and
 - (b) points equivalent to DNS for the race(s) at HHSC.(amends Appendix A)

SCORING – POINT SCORE

- 17.8 At least 3 boats must start at least 12 races to constitute a series.
- 17.9 The Low Point System of Appendix A will apply except that the Bonus Point System will apply for the Mirror class.
- 17.10 RRS A9 Race Scores in a Series longer than a Regatta will apply. The number of boats entered in the series will be the number of registered boats that have started in at least one race.
- 17.11 For the Laser Point Score, race scores will be aggregated regardless of the rig that was sailed in each race.

17.12 If a boat does not race because her crew is required to perform race committee duties, or because she is representing HHSC at an official event in any HHSC eligible class, she will be awarded points equal to the score for median place for that day's HHSC Point Score race(s) (amends Appendix A).

17.13 Each boat shall discard her worst 25% (rounded down) scores.

18 REPLACEMENT OF EQUIPMENT

18.1 Competitors may replace one boat during the series and transfer to the replacement boat any accumulated points for the Point Score and Club Championship.

19 EQUIPMENT AND MEASUREMENT CHECKS

19.1 If required by class rules, boats shall hold a valid class measurement certificate.

19.2 Boats may be inspected at any time for compliance with the class rules and sailing instructions.

20 ADVERTISING

Boats may be required to display advertising chosen and supplied by the organizing authority.

21 SUPPORT BOATS

Except in Club Championship races on-water coaching is permitted, subject to approval in advance by the race committee (amends RRS 41).

22 SAFETY REGULATIONS

22.1 Racing will be supervised by an officer of the day (OOD), nominated by the Commodore. The OOD will appoint a principal race officer (PRO) and on-water and shore-based assistants. The Commodore, Vice Commodore, OOD, PRO and nominated assistants shall be the race committee.

22.2 Competitors shall attend briefings whenever possible.

22.3 Boats leaving from HHSC shall sign on prior to going afloat.

22.4 Boats that are not leaving from HHSC shall, prior to their first warning signal, sign on by hailing their sail number to the PRO, and shall not start until they have been acknowledged.

22.5 Any boat that retires shall notify a member of the race committee as soon as possible.

22.6 Boats returning to HHSC shall sign off as soon as possible after returning to shore.

22.7 Boats that are not returning to HHSC shall sign off by notifying a member of the race committee prior to leaving the racing area.

22.8 A boat that does not sign on may be scored DNC for her first race of the day without a hearing (amends RRS 63.1).

22.9 A boat that does not sign off may be scored DNF for her last race of the day without a hearing (amends RRS 63.1).

22.10 **Junior classes:** Racing may be abandoned at an average wind speed of 20 knots or above.

22.11 **Senior classes:** Racing may be abandoned at an average wind speed of 25 knots or above.

23 RADIO COMMUNICATION

23.1 While racing, and except in an emergency, a boat shall neither make nor receive radio communications that are not available to all boats. This restriction also applies to mobile telephones and any other telecommunications device.

23.2 A boat may carry a GPS tracking device, to be used solely for passive data recording.

24 DISCLAIMER OF LIABILITY & RISK WARNING

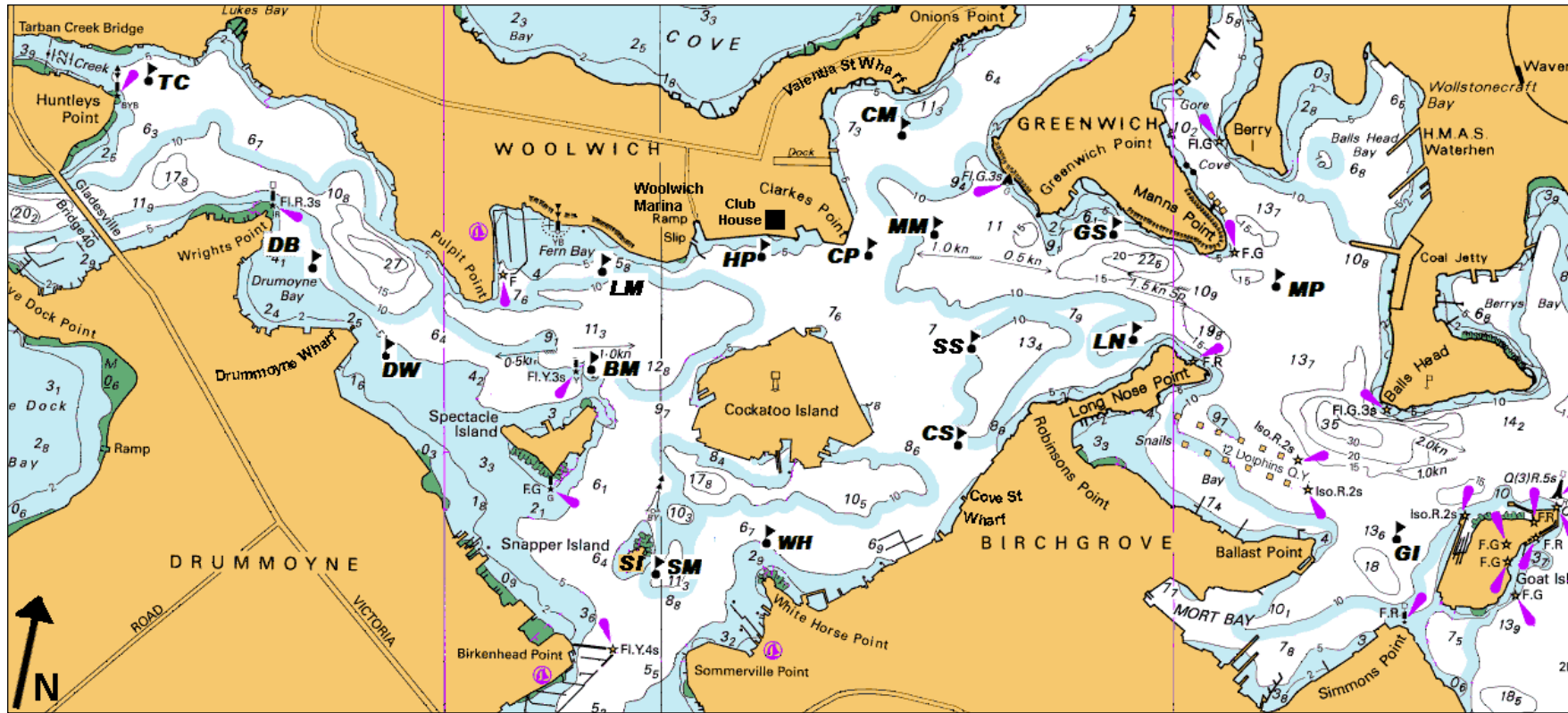
- 24.1 This Risk Warning is issued jointly by HHSC and NSW Maritime, pursuant to the Civil Liability Act 2002 to all persons wishing to participate in this event.
- 24.2 Competitors participate entirely at their own risk. RRS 4, Decision to Race states “the responsibility for a boat's decision to participate in a race or to continue racing is hers alone.”
- 24.3 The Organising Authority, NSW Maritime, their directors, officers, volunteers and sponsors:
- (a) will not accept any liability for damage or personal injury or death sustained in conjunction with or prior to, during, or after this event; and
 - (b) shall not be responsible for the seaworthiness of any boat whose entry is accepted, the adequacy of its equipment or its insurance arrangements.
- 24.4 Participants are warned that, regardless of the precautions which might be taken by reasonable and experienced persons, sailing can be a dangerous pursuit and participants are exposed to significant risk of property damage, physical harm and possibly death. These risks may include, but are not limited to:
- the extremes of weather and sea conditions;
 - the potential that control of vessels may be lost, resulting in collisions;
 - the sudden movement of the vessel at any time and the possibility that participants may fall or be thrown overboard;
 - the possibility that participants may be injured by equipment on the vessel;
 - the absence of immediate medical care and the likelihood that significant delays may occur before medical care is available;
 - exposure to the elements for extended periods.
- 24.5 The Organising Authority and NSW Maritime jointly warn participants that regardless of their best intentions, they may be unable to render assistance to participants who are in distress.
- 24.6 Participants are warned to consider all risks before deciding to participate in any sailing event.

25 INSURANCE

- 25.1 Participants are advised that HHSC's third party liability insurance cover does not extend to participants. Participants must make their own private arrangements with an insurer.
- 25.2 Each participating boat shall be insured with valid third-party liability insurance with a minimum cover of \$10,000,000. Confirmation of such insurance must be provided prior to a boat's first race.
- 25.3 Attention is drawn to the Yachting NSW insurance program at www.ynswinsurance.com, through which a proportion of insurance premiums paid by members is rebated to HHSC.

Attachment B – Courses

B1 - LOCATION OF ROUNDING MARKS



Key	Name	Location
BM	Beacon	30m E of Port Channel Mark
CI	Cockatoo Island	100m East of Cockatoo Is
CM	Compass	250m south of Valencia St Wharf
CP	Clarks Point	100m ESE of Clarks Point
CS	Cove Street	100m NW of Cove Street Wharf
DB	Drummoyne Bay	200m SE of Wrights Point
DW	Drummoyne Wharf	250m SE of Drummoyne Wharf
GI	Goat Island	200m W of Goat Island
GS	Greenwich SC	150 SW Greenwich SC ramp
HP	Horse Paddock	100m SW of HHSC ramp

Key	Name	Location
LM	Le Merle	SE Fern Bay cardinal mark
LN	Long Nose Point	100m WNW of Long Nose Point
MM	Middle Mouth	200m E of Clarks Point
MP	Manns Point	200m SE of Manns Point
SI	Snapper Island	
SM	Snapper Mark	100m E of Snapper Island wharf
SS	Ships	200m WNW of Robinson Point
TC	Tarban Creek	100m NE of Huntleys Point
WH	White Horse	100m N of White Horse Point

Attachment B – Courses

B2 – SENIOR RIVER COURSES – 1 RACE PER DAY

	Course R1 North East	Course R2 East	Course R3 South East	Course R4 South	Course R5 West	Course R6 Alternate East	Course R7 South West
LASER	Start Compass (S) White Horse Manns Point Ships Manns Point Beacon ** Compass (S) White Horse Manns Point Beacon Finish	Start Manns Point Ships (S) Compass Beacon Manns Point Beacon ** Manns Point Ships (S) Compass Beacon Finish	Start Ships Compass (S) Goat Island Clarkes Point Ships ** Compass (S) Goat Island Clarkes Point Ships Finish	Start Snapper Is. (S) Tarban Creek Snapper Island Beacon Drum. Bay ** Snapper Island Le Merle (S) Compass (S) Ships (S) Finish	Start Drum. Wharf Compass (S) Ships (S) Drum. Wharf Compass (S) Ships (S) ** Drum. Wharf Ships (S) Finish	Start Long Nose Compass Drum. Wharf (S) Long Nose Drum. Wharf (S) ** Long Nose Compass Drum. Wharf (S) Finish	Start Snapper Mark Greenwich Cove Street Greenwich Compass Snapper Mark Greenwich ** Cove Street Greenwich Cove Street Greenwich Compass Finish

FLYING 11, MIRROR	Start Compass (S) White Horse Manns Point Beacon ** Compass (S) White Horse Manns Point Beacon Finish	Start Manns Point Ships (S) Compass Beacon Compass Beacon ** Manns Point Ships (S) Compass Beacon Finish	Start Ships Compass (S) Long Nose (S) Clarkes Point Ships ** Compass (S) Long Nose (S) Clarkes Point Ships Finish	Start Snapper Is. (S) Drum. Bay Snapper Island Beacon Drum. Bay ** Snapper Island Le Merle (S) Compass (S) Ships (S) Finish	Start Drum. Wharf Compass (S) Ships (S) Drum. Wharf Compass (S) Ships (S) ** Drum. Wharf Ships (S) Finish	Start Ships Compass Drum. Wharf (S) Ships Drum. Wharf (S) ** Ships Compass Drum. Wharf. (S) Finish	Start Snapper Mark Greenwich Cove Street Greenwich Compass ** Snapper Mark Greenwich Compass Finish
--------------------------	--	---	---	---	--	---	--

29er	Start Compass (S) White Horse Manns Point Beacon Compass (S) White Horse Manns Point Beacon ** Compass (S) White Horse Manns Point Beacon Finish	Start Manns Point Ships (S) Compass Beacon Manns Point Ships (S) Compass Beacon ** Manns Point Ships (S) Compass Beacon Finish	Start Ships Compass (S) Goat Island Compass (S) Goat Island Clarkes Point Ships ** Compass (S) Goat Island Clarkes Point Ships Finish	Start Snapper Is. (S) Tarban Creek Snapper Island Beacon Drum. Bay Snapper Island Beacon Drum. Bay ** Snapper Island Le Merle (S) Compass (S) Ships (S) Finish	Start Drum. Wharf Snapper Island Compass (S) Ships (S) Drum. Wharf Snapper Island Compass (S) Ships (S) ** Drum. Wharf Snapper Island Compass (S) Ships (S) Finish	Start Long Nose Compass Drum. Wharf (S) Long Nose Compass Drum. Wharf (S) ** Long Nose Compass Drum. Wharf (S) Finish	Start Snapper Mark Greenwich Cove Street Greenwich Compass Snapper Mark Greenwich ** Cove Street Greenwich Compass Snapper Mark Compass Finish
-------------	---	---	---	---	---	---	---

All marks to Port except where indicated (S)

** Final rounding mark when the course is shortened before the start

Attachment B – Courses

B3 – SENIOR RIVER COURSES – 2 RACES PER DAY

		Course R1 North East	Course R2 East	Course R3 South East	Course R4 South	Course R5 West	Course R6 Alternate East	Course R7 South West
LASER, 29er	Race 1	Start Compass (S) White Horse Manns Point Beacon Finish	Start Manns Point Ships (S) Compass Beacon Finish	Start Ships Compass (S) Long Nose (S) Clarkes Point Ships Finish	Start Snapper Mark Le Merle (S) Snapper Mark Le Merle (S) Compass (S) Ships (S) Finish	Start Drum. Wharf Clarkes Point (S) Ships (S) Beacon Clarkes Point (S) Finish	Start Long Nose Drum. Wharf (S) Clarkes Point Beacon Finish	Start Snapper Mark Greenwich Cove Street Greenwich Compass Finish
	Race 2	Start Compass (S) Beacon Compass (S) Beacon Clarkes Point Beacon Finish	Start Manns Point Beacon Manns Point Beacon Finish	Start Ships Compass (S) Long Nose (S) Compass (S) Long Nose (S) Finish	Start Snapper Is. (S) Drum. Bay Snapper Island Le Merle (S) Compass (S) Ships (S) Finish	Start Drum. Wharf Ships (S) Beacon Ships (S) Finish	Start Long Nose Compass Drum. Wharf (S) Clarkes Point Beacon Finish	Start Snapper Mark Greenwich Cove Street Greenwich Compass Finish

FLYING 11, MIRROR	Race 1	Start Compass (S) White Horse Ships Beacon Finish	Start Manns Point Ships (S) Compass Beacon Finish	Start Ships Compass (S) Long Nose (S) Finish	Start Snapper Mark Le Merle (S) Compass (S) Ships (S) Finish	Start Drum. Wharf Clarkes Point (S) Beacon Clarkes Point (S) Finish	Start Long Nose Compass Drum. Wharf. (S) Finish	Start Snapper Mark Greenwich Compass Finish
	Race 2	Start Compass (S) Beacon Compass (S) Beacon Finish	Start Manns Point Beacon Ships (S) Beacon Finish	Start Ships Compass (S) Long Nose (S) Finish	Start Snapper Is. (S) Drum. Bay Snapper Island Le Merle (S) Compass (S) Finish	Start Drum. Wharf Ships (S) Beacon Clarkes Point (S) Finish	Start Long Nose Beacon Clarkes Point Beacon Finish	Start Snapper Mark Greenwich Cove Street Greenwich Compass Finish

All marks to Port except where indicated (S)

B4 – JUNIOR RIVER COURSES

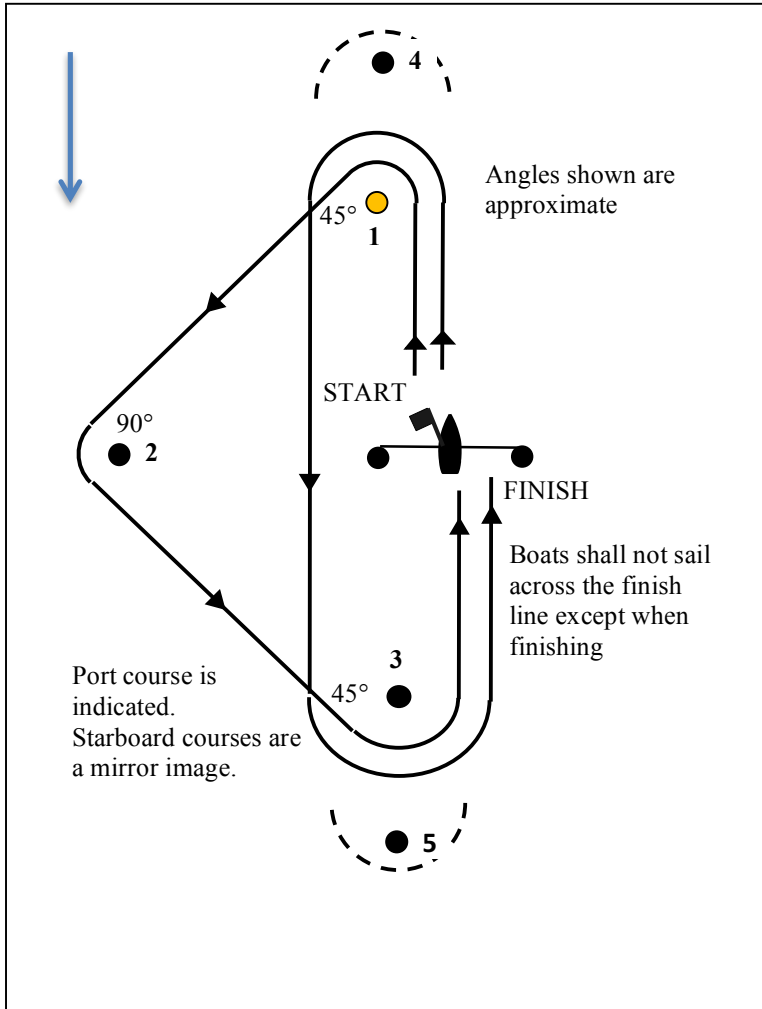
Laser 4.7, Junior Race Fleet Course R6	Laser 4.7, Junior Race Fleet Course R7
Start Greenwich Compass Horse Paddock Greenwich Horse Paddock ** Greenwich Compass Horse Paddock Finish	Start Beacon (S) Horse Paddock (S) Ships (S) Beacon (S) Ships (S) ** Beacon (S) Horse Paddock (S) Ships (S) Finish

All marks to Port except where indicated (S)

** Final rounding mark when the course is shortened before the start

Attachment B – Courses

B5 – WINDWARD-LEEWARD-TRIANGULAR COURSES



JUNIOR COURSES

Course 1	Start-1-3-Finish
Course 2	Start-1-2-3-Finish
Course 3	Start-1-2-3-1-3-Finish
Course 4	Start-1-2-3-1-3-1-2-3-Finish

SENIOR COURSES

All Classes except 29er

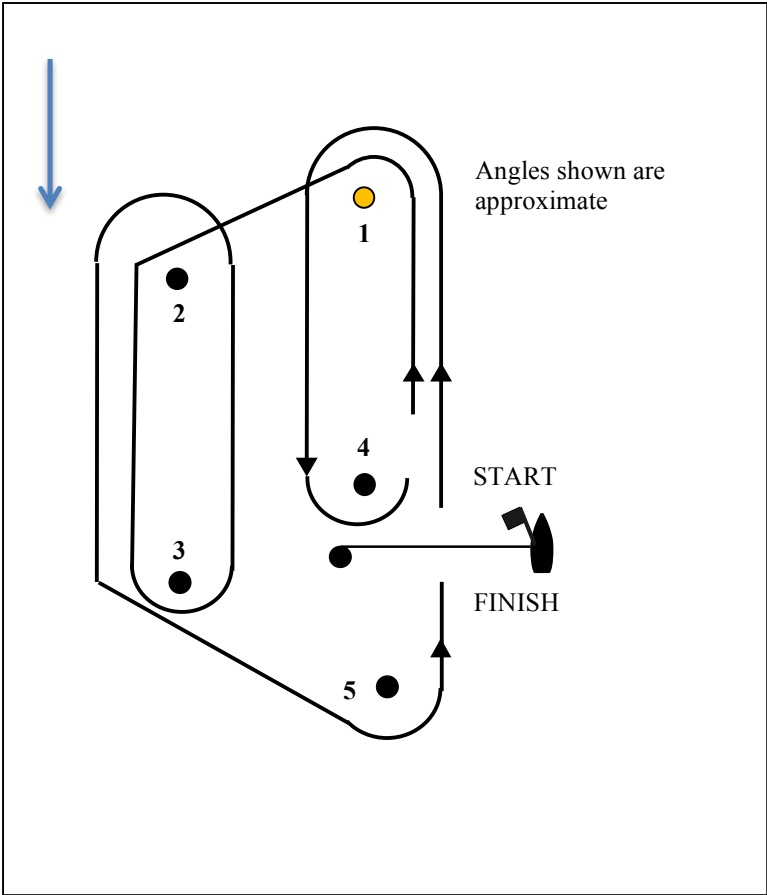
Course 1	Start-1-3-Finish
Course 2	Start-1-2-3-1-3-Finish
Course 3	Start-1-2-3-1-3-1-2-3-Finish
Course 4	Start-1-2-3-1-3-1-2-3-1-3-Finish

29er

Course 1	Start-4-5-Finish
Course 2	Start-4-5-4-5-Finish
Course 3	Start-4-5-4-5-4-5-Finish
Course 4	Start-4-5-4-5-4-5-4-5-Finish

Attachment B – Courses

B6 – TRAPEZOID COURSES



TRAPEZOID COURSES

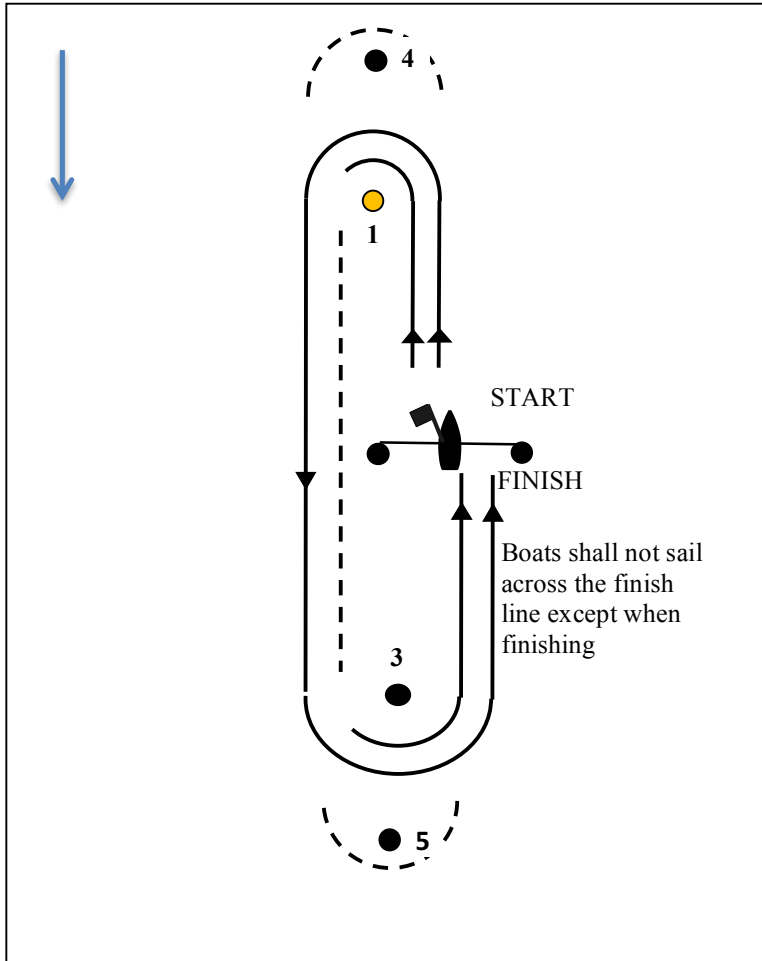
- Course I2 Start-1-4-1-2-3-5-Finish
- Course I3 Start-1-4-1-4-1-2-3-5-Finish
- Course I4 Start-1-4-1-4-1-4-1-2-3-5-Finish

- Course O1 Start-1-2-3-5-Finish
- Course O2 Start-1-2-3-2-3-5-Finish
- Course O3 Start-1-2-3-2-3-2-3-5-Finish
- Course O4 Start-1-2-3-2-3-2-3-2-3-5-Finish

Mark 3 may be a gate
Mark 4 may be a gate

Attachment B – Courses

B7 – WINDWARD-LEEWARD COURSES



JUNIOR COURSES

Course W1	Start-1-3-Finish
Course W2	Start-1-3-1-3-Finish
Course W3	Start-1-3-1-3-1-3-Finish
Course W4	Start-1-3-1-3-1-3-1-3-Finish

SENIOR COURSES

All Classes except 29er

Course W1	Start-1-3-Finish
Course W2	Start-1-3-1-3-Finish
Course W3	Start-1-3-1-3-1-3-Finish
Course W4	Start-1-3-1-3-1-3-1-3-Finish

29er

Course W1	Start-4-5-Finish
Course W2	Start-4-5-4-5-Finish
Course W3	Start-4-5-4-5-4-5-Finish
Course W4	Start-4-5-4-5-4-5-4-5-Finish